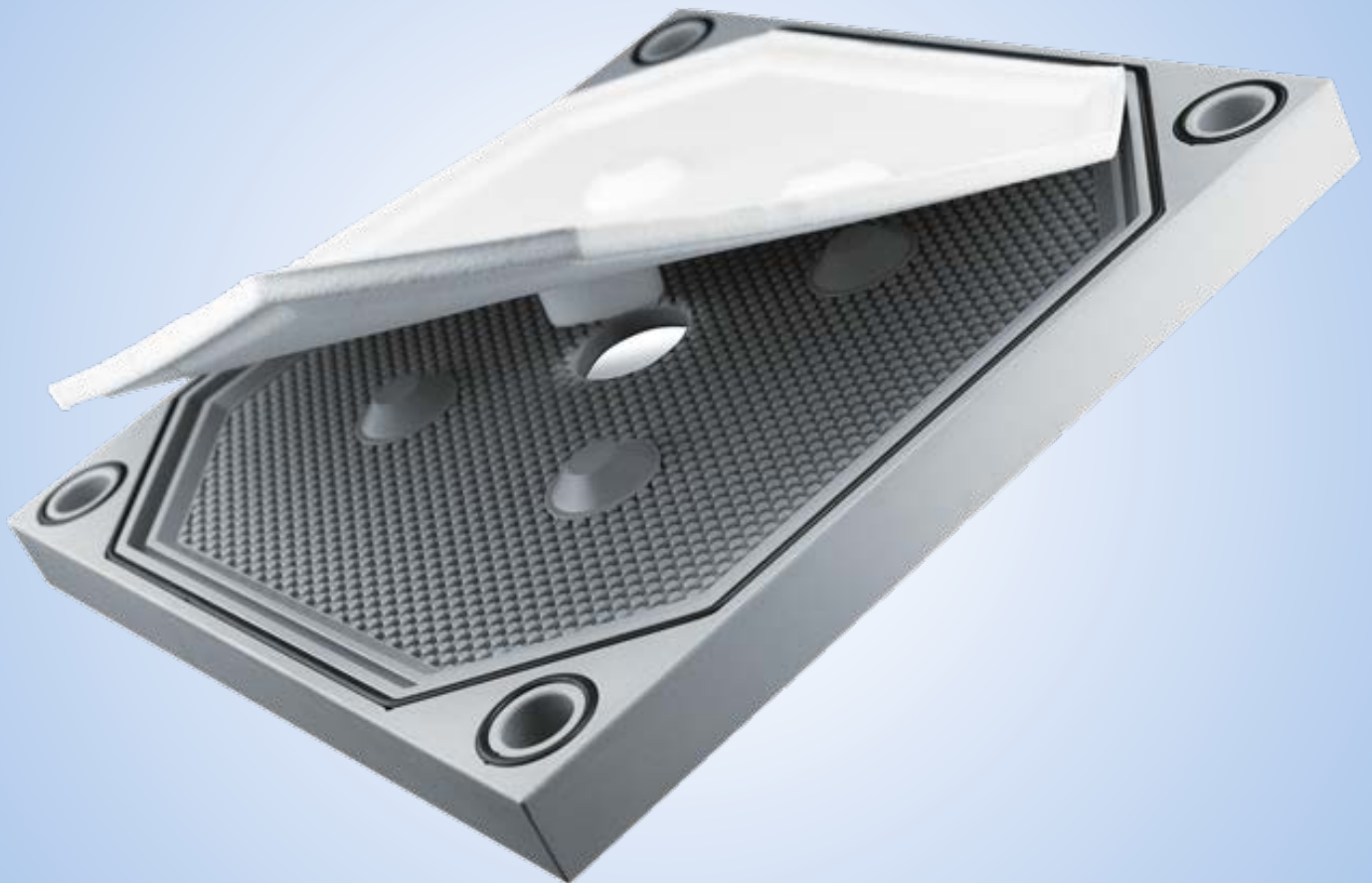

LENSER FORMED COMPOSITE (LFC)

THE EASIEST WAY TO CHANGE FILTER CLOTHS



FOR SEALED FILTER ELEMENTS (CGR)

QUICK AND EASY INSTALLATION

LENSER FORMED COMPOSITE (LFC)

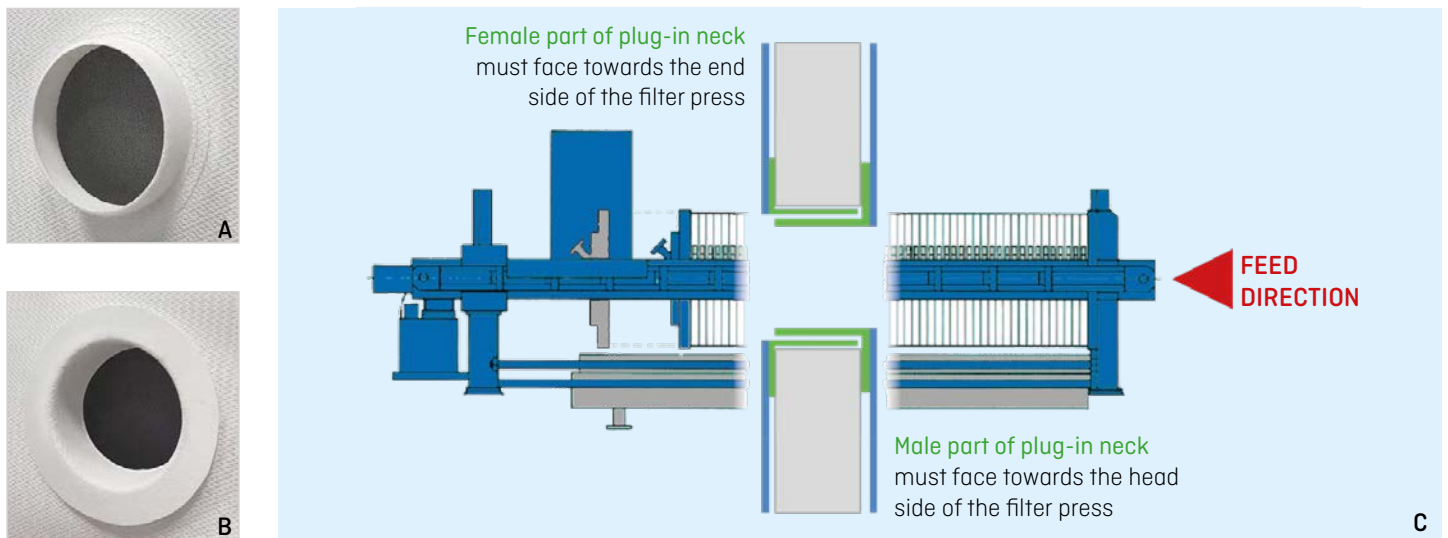
The LFC is based on needle felt fibers and was designed exclusively for sealed filter elements. It is completely drip-tight and fits perfectly into the sealing groove of the filter element, making slippage impossible. Assembly is particularly easy: Thanks to interlocking plug-in necks, laborious hammering in of the seals is a thing of the past. The LFC thus enables a reduction in downtime of up to 90%.

FEATURES

- + Plug-in neck consists of two interlocking parts (female part/ male part)
- + Suitable for low and high pH values
- + Sintered fiber construction perfectly adapts to the filter element geometry
- + With robust surface finish

BENEFITS

- + Fast and effortless assembly
- + Very short downtimes
- + Easy to retrofit
- + Cloth exchange without removing the filter plate



- A Detail view of plug neck part 1: Male part (smaller diameter)
B Detail view of plug neck part 2: Female part (larger diameter)
C Illustration for correct cloth assembly

